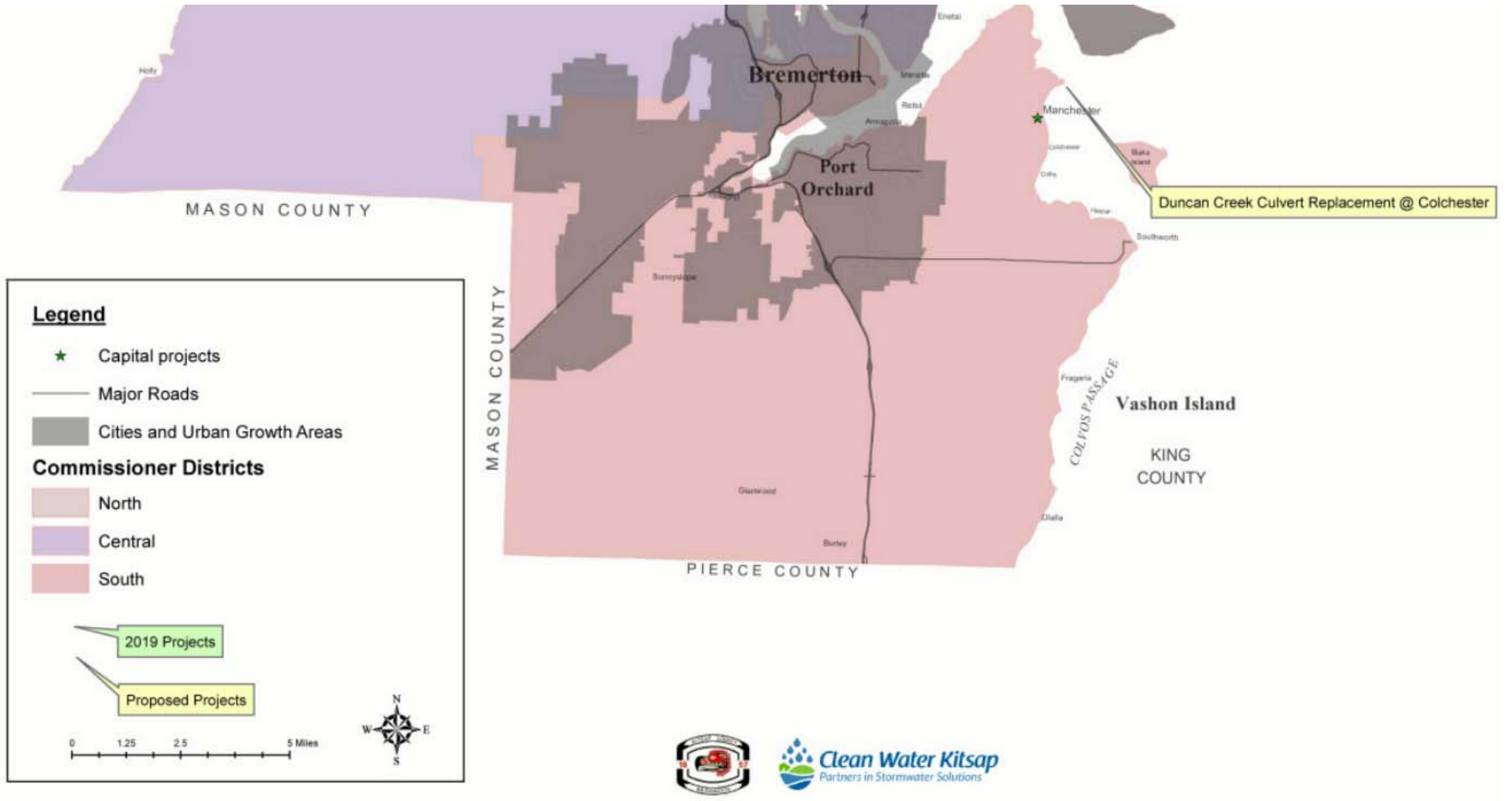


# Kitsap County Stormwater Division Proposed Capital Facility Plan (2019-2024) Project Locations



# Kitsap County Public Works Stormwater Division Capital Facility Plan (CFP) 2019-2024

## Duncan Creek Culvert Replacement Project Estimated Budget of \$2,000,000

CFP #	Project #	Project Description	GMA Project Type	Project Purpose	Project Prioritization Score	Non-Stormwater Funding	Estimated Annual Stormwater Division CFP Budget (Stormwater Division CFP Funding from Stormwater Fees)						
							2019	2020	2021	2022	2023	2024	6-Year Stormwater Division CFP Total
10	97003040	Point-No-Point (PNP) Tide-Gate Replacement	Non-Capacity	Environmental Retrofit	250		\$ 100,000					\$ 1,400,000	\$ 1,500,000
		This project replaces the existing tide-gate structure at PNP with a fish-passable tide-gate structure that also allow tidal flow into the former saltwater wetland. In addition, the new tide-gate will be sized to account for future sea-level rise and storm-event increased expected due to climate change.											
11	97003110	Duncan Creek Culvert Replacement @ Colchester	Non-Capacity	Environmental Retrofit	250					\$ 1,000,000	\$ 1,000,000	\$ 2,000,000	

# Fish & Wildlife Priority Index for Culvert Correction

## Duncan Creek No. 11 (as of 2002)

PRIORITY INDEX FOR BARRIER CORRECTIONS IN KITSAP COUNTY - 2002 (Revised 12/02/02)							
Stream Name	Species Code	Location	Priority Index	Cost	Length	Value	Description
Mosher Cr.	15.0259	Tracyton Blvd.	2,4,7	1618	21326	27.99	Partial Barrier
Seabeck Cr.	15.0400	Seabeck-Holly Rd.	2,4,7	12003	11560	27.32	Fishway Repair
X-Trib. Steele Cr.	15.0274	NE Glad Pond Rd.	2,4,7	2771	6206	26.96	Complete barrier downstream at Brownsville Hwy.
X-Trib. Otalla Cr.	15.0108	Otalla Valley Rd.	2,4,6,7	2221	6924	24.58	Complete Barrier for chum. Cost based on removal.
X-Trib. Liberty Bay	15.0291	Lemolo Shore Dr.	2,4,7	697	7612	22.24	Total barrier 247 meters upstream at SR 305.
Strawberry Cr.	15.0246	Silverdale Wy.	2,4,7	3562	6396	21.1	Partial barrier to Chum. Culvert in a state of deterioration.
Strawberry Cr.	15.0246	Silverdale Loop Rd/	2,4,7	3221	5653	20.51	Complete barrier to Chum.
Strawberry Cr.	15.0246	Anderson Hill Rd.	2,4,7	2286	4000	19.57	Partial barrier to Coho.
X-Trib. Appletree Cove	15.0306	NE Jefferson Pt. Rd.	4,7	673	1315	18.6	Complete barrier immediately downstream.
Stavis Cr.	15.0404	Seabeck-Holly Rd.	4,7	153	7041	17.84	Complete Barrier
Mosher Cr.	15.0259	Central Valley Rd.	4,7	366	18541	16.11	Partial Barrier
Duncan Cr.	15.0191	Conifer Rd.	2,4,7	673	465	14.94	Complete Barrier - culvert rusted through.
X-Trib. Steele Cr.	15.0275	Paulsen Rd.	4	NA	2797	13.67	Juvenile Coho Barrier
Little Boston Cr.	15.0350	Little Boston Rd.	4,7	251	2001	13.48	Complete barrier downstream at hatchery intake (Currently Cutthroat Use Only)
Johnson Cr.	15.0387	Seabeck Hwy.	4,7	732	1435	11.99	Complete Barrier
Middle Cr.	15.0352	Little Boston Rd.	4,7	381	962	11.76	Complete Barrier
Hoot Cr.	15.0255X	NW Walker Rd.	4,7	54	263	11.38	Complete Barrier
Clear Cr.	15.0249	Mountain View Rd.	4,7	12	1143	10.58	Complete Barrier
Jump Off Joe Cr.	15.0369	Pioneer Wy.	4,7	437	935	9.00	Complete barrier 332 meters upstream at private xing.
X-Trib. Little Anderson Cr.	15.0381	Anderson Hill Rd.	4,7	367	438	8.92	Complete Barrier
Little Beef Cr.	15.0399	Pioneer Rd. NW	4,7	534	410	8.77	Complete Barrier
X-Trib. Strawberry Cr.	15.0247	Frontier Rd. NW	4,7	228	458	8.42	Complete barrier immediately downstream at SR 3.
SF Johnson Cr.	15.0282	Viking Wy.	4,7	523	565	8.4	Complete Barrier
Bjorgen Cr.	15.0290	Stodhoff Rd.	4,7	630	443	8.34	Partial Barrier - 3 barriers downstream.
X-Trib. Clear Cr.	15.0254	Mountain View Rd.	4,7	140	400	8.14	Complete Barrier
Mosher Cr.	15.0259	County Easement	4,7	70	325	6.5	Complete Barrier
Mosher Cr.	15.0259	Fairgroves Rd.	4,7	55	212	5.26	Partial Barrier
Johnson Cr.	15.0283	Finn Hill Rd.	4,7	222	61	5.09	Complete Barrier
Mosher Cr.	15.0259	Conifer Dr. NE	4,7	45	147	4.04	Partial Barrier

Footnote: Species Code-2=Chum, 4=Coho, 6=Steelhead, 7=Trout